

SAN FRANCISCO DISTRICT (SPN) IIS & CW PROGRAM BRANCH

BUSINESS OPPORTUNITIES OPEN HOUSE (BOOH)

FY26 Acquisition Plans

Interagency and International Services (IIS)
Civil Works (CW)
Military Construction (MilCon)

Tessa Beach, Ph.D.
Deputy Senior Civilian & Planning Chief



U.S. ARMY



US Army Corps
of Engineers®



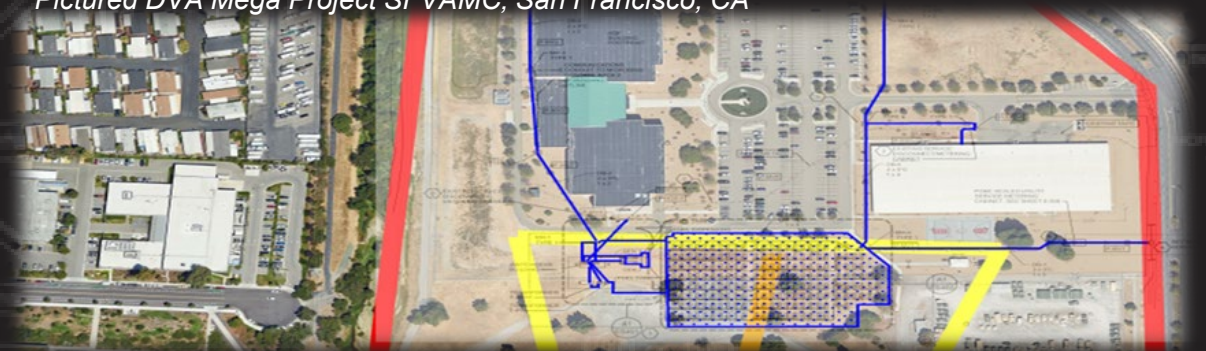
Civil Works Program

Pictured Pajaro River FRM Project, Watsonville, CA



IIS Program

Pictured DVA Mega Project SFVAMC, San Francisco, CA

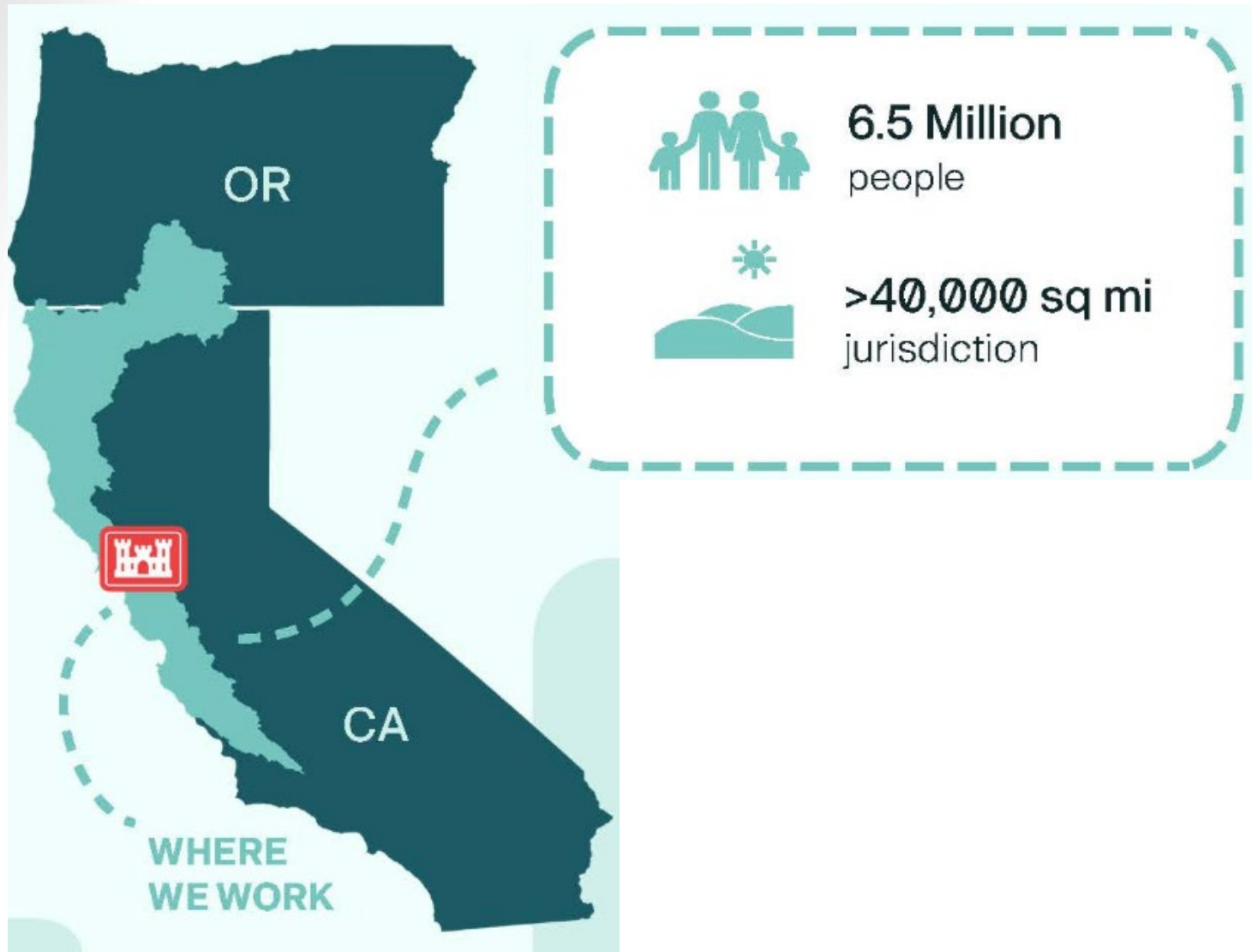


Milcon-ERCIP

Pictured Power Generation ERCIP Project, Mountain View, CA



AGENDA



Program Overview

San Francisco District Area of Responsibility

Our Mission and Business Lines

How we serve the larger USACE Mission within San Francisco District

Acquisition Plans

Review efforts scheduled for advertisement and/or award in FY26



SAN FRANCISCO DISTRICT – IIS & CW BRANCH PROGRAM OVERVIEW



Supporting USACE Missions

Civil Works (CW)

- Work with non-federal partners on Army Corps Civil Works missions including Navigation, Flood Risk Management, Coastal Storm Risk Management, Ecosystem Restoration, Recreation, etc.

Interagency & International Services (IIS)

- Work with partners including U.S. Federal agencies outside of the DoD; state, local, territorial, tribal, and foreign governments; international organizations and U.S. firms, i.e. Dept of Veterans Affairs, National Park Service, Environmental Protection Agency (EPA), etc.

Military Construction (MilCON)

- Work with partners including Department of Defense (DOD) Military Agencies and Installations.

Project Delivery Team Partnership Model

Hired, Internal, External...

- Customer, Partners/Stakeholders, Non-Federal Sponsors
- Architects & Engineers
- Value Engineers and Cost Estimators
- Environmental & Cultural Resource Compliance Managers
- Budget, Scheduling, Resource Managers
- General Contractors, Construction Managers and Safety Specialists
- Contracting Officers/Specialists
- Office of Counsel & Real Estate Specialists
- USACE Centers of Expertise Subject Matter Experts



IIS & CW PROGRAM FY 2026 ACQUISITION PLAN

| Project | Program | Acquisition | Est ADV | Est Award | Est Price Range |
|---|-------------|-------------|----------|-----------|-----------------|
| Pajaro Flood Risk Management Project Santa Cruz County, CA (Reach 2/3) | Civil Works | FULL & OPEN | MAR 2026 | JUN 2026 | \$5M - \$10M |
| Design Contract | | | | | |

| Project | Program | Acquisition | Est ADV | Est Award | Est Price Range |
|---|--------------------------|-------------|----------|-----------|-----------------|
| FY26 Power Generation with Backup Power ERCIP MILCON Project Mountain View, CA | Military Construction | FULL & OPEN | JUN 2026 | SEPT 2026 | \$15M-\$20M |
| Construction Contract | | | | | |



PAJARO RIVER AT WATSONVILLE, CA (REACHES 2/3 DESIGN CONTRACT) | SITE MAP

LOCATION: Santa Cruz and Monterey Counties, CA

TARGET ADV: MAR 2026 (In-Progress)

TARGET AWARD: JUN 2026

EST. COST: \$5M - \$10M

SCOPE: The Pajaro River project is a flood risk management project which includes levees, floodwalls, and floodplain borrow features to reduce the risk of flooding for the City of Watsonville, the Town of Pajaro, and the surrounding high-value crop agricultural lands. The project is sponsored by the Pajaro Regional Flood Management Agency

This portion of the project includes construction of new floodwalls over new rebuilt levees (Reach 3) and new set-back levees (Reach 2) in Santa Cruz and Monterey Counties near the City of Watsonville.

EST. PERFORMANCE PERIOD:
2026 thru 2030 (~48 Mo)

ACQUISITION METHOD: FULL & OPEN

NOTABLE CHALLENGES, CONSTRAINTS and/or OPPORTUNITIES:

Real estate acquisition; utility relocations; completion of contract design documentation could impact solicitation.





FY26 POWER GENERATION WITH BACKUP POWER ERCIP MILCON | SITE MAP

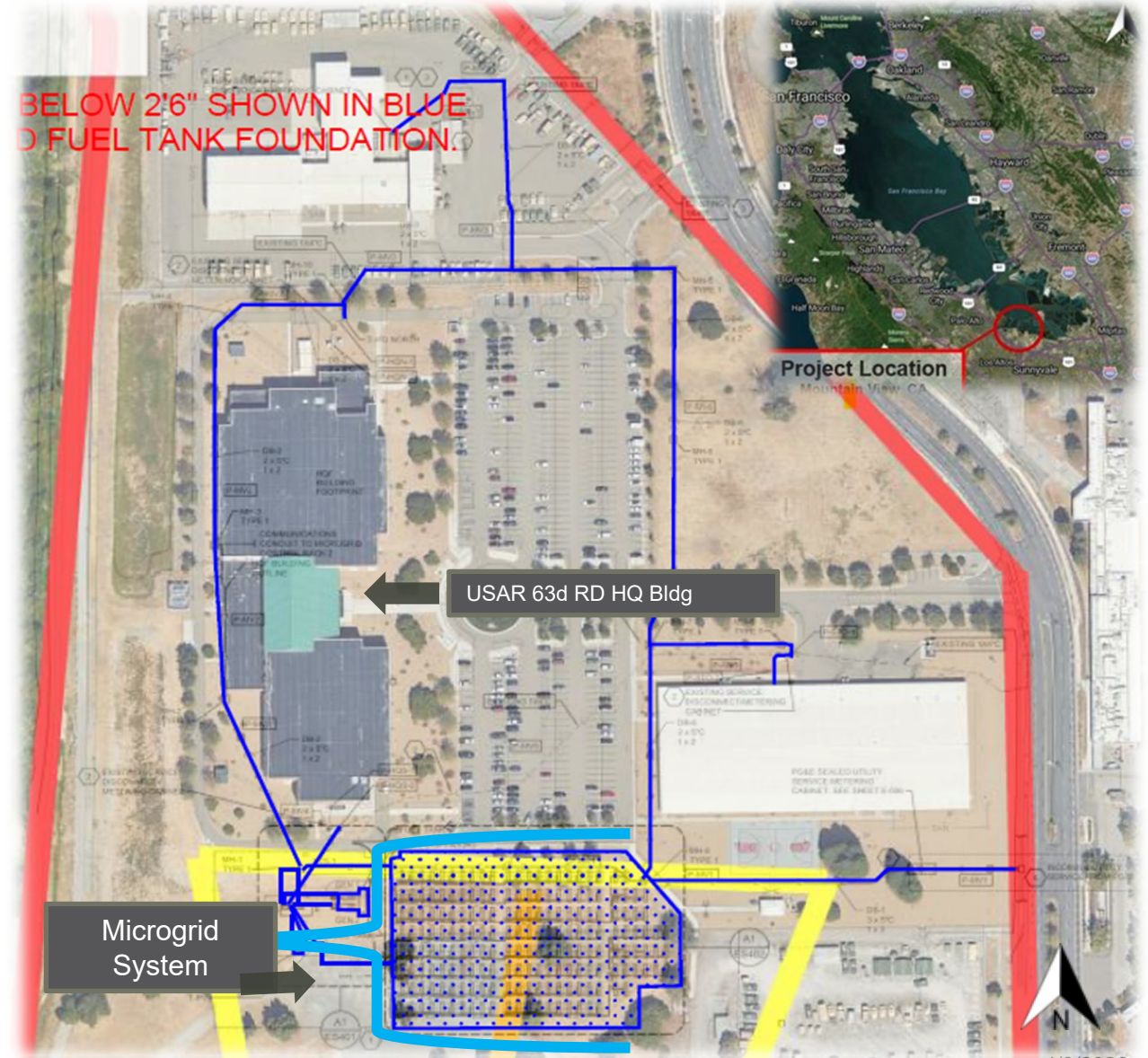
LOCATION: Mountain View, CA
TARGET ADV: JUNE 2026
TARGET AWARD: SEPT 2026
EST. COST: \$15M-\$20M

SCOPE: Install a microgrid system that will have full islanding capability. The microgrid system will incorporate a 750kW photovoltaic (PV) solar system with low voltage switchgear for building energy shifting; a 750kWh battery energy storage system (BESS); an 800kW diesel backup generation system (two generators of 400 kW each for load-balancing operations to minimize fuel use for peak load), with a 10,000-gallon fuel storage tank. The photovoltaic system will be a ground-mounted installation south of the headquarters building. The microgrid system will include a master microgrid controller and automatic smart switches controlling the generation resources within the Reserve Center to provide up to 14 days of back-up power for HQ Operations in event of power outage.

EST. CONSTRUCTION PERIOD:
 OCT 2026 – OCT 2028 (~24 Mo)

ACQUISITION METHOD: Full & open

NOTABLE CHALLENGES, CONSTRAINTS and/or OPPORTUNITIES:
 PG&E coordination and lead time for replacing and obtaining project site transformers.



SAN FRANCISCO DISTRICT IIS & CW PROGRAM BRANCH

Thank you!

***We look forward to partnering
with you in the future!***

&

***See you Next Year for
FY27 Business Opportunities!***



**US Army Corps
of Engineers®**

U.S. ARMY



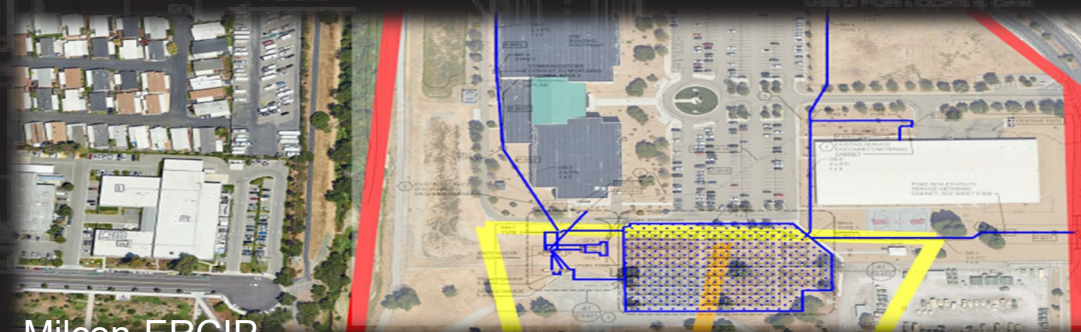
Civil Works Program

Pictured Pajaro River FRM Project, Watsonville, CA



IIS Program

Pictured DVA Mega Project SFVAMC, San Francisco, CA



Milcon-ERCIP

Pictured Power Generation ERCIP Project, Mountain View, CA